



Project: Qatar Body Sheet Repair Line System
Design by: Guangdong Jingzhongjing



April 10, 2020

Company Profile

Guangdong Jingzhongjing Industrial Painting Equipment Co., Ltd. is a large-scale enterprise integrating science, industry and trade specializing in the development, manufacturing and sales of industrial coating equipment. The company is located about 20 kilometers southeast of Guangzhou Baiyun International Airport, covers an area of more than 30,000 square meters, and currently has more than 500 employees, of which more than 60 are senior engineers and management personnel. The main products produced are Baozhongbao brand environmentally friendly dry spray paint baking room, water spin spray paint room, water curtain spray paint room, bridge drying room, chamber drying room, rain detection line, body sheet metal correction instrument and Large-scale industrial coating production lines for cars, buses, and machinery, etc., with an annual production capacity of 6,000 sets.

The company has always pursued the business philosophy of "market-oriented, image creation with integrity, leading trend with new products, creating famous brand with high quality, longing with management, and seeking development with innovation", and vigorously promotes "Unity and hard work, innovation, advocating science, and pursuing excellence" has made every effort to build an enterprise's integrity image and product brand image, which has won recognition from the government, the public and the market. Became a "contract-honoring and trustworthy" enterprise in Guangzhou, a qualified enterprise for product sampling inspection in Guangzhou Quality and Technical Supervision Bureau, a quality-certified enterprise for environmental protection industrial products in Guangzhou, an ISO9001: 2000 international quality certification and a CE-certified enterprise, China Automotive Maintenance Industry Association Member governing unit. The BZB series of paint spray booths are used by **Shanghai Volkswagen, Shanghai GM, Original Honda,**

Original Nissan, Original Volkswagen, FAW Audi, FAW Volkswagen, FAW Mazda, FAW Hongqi, GAC Toyota, Dongfeng Peugeot, Dongfeng Citroen, Dongfeng Honda, Chongqing Ford, Dongfeng Nissan , Zhengzhou Nissan, United Brand, Nanjing MG, Jianghuai Automobile and other well-known automobile production enterprises have been designated as designated products. The products are sold in 31 provinces, municipalities and autonomous regions across the country and exported to the United States, Japan, Russia, Australia, Canada, Germany, South Korea, Thailand, Malaysia, Singapore, Vietnam, Pakistan and other countries. The company has offices in major capital cities and agencies in the country of export. 24 hours a day to receive product consultation and after-sales service matters.

The ends of the earth are like neighbors. The success of Jing Zhongjing's cause is inseparable from the care, support, guidance and supervision of friends from all walks of life and international friends. Mutual benefit and win-win cooperation will always be the purpose and destination of Jing Zhongjing. Jingzhongjing Company is looking forward to waiting for your presence at any time!



Guangdong Jingzhongjing Industrial Painting Equipment Co., Ltd
China ·Guangzhou Production Base

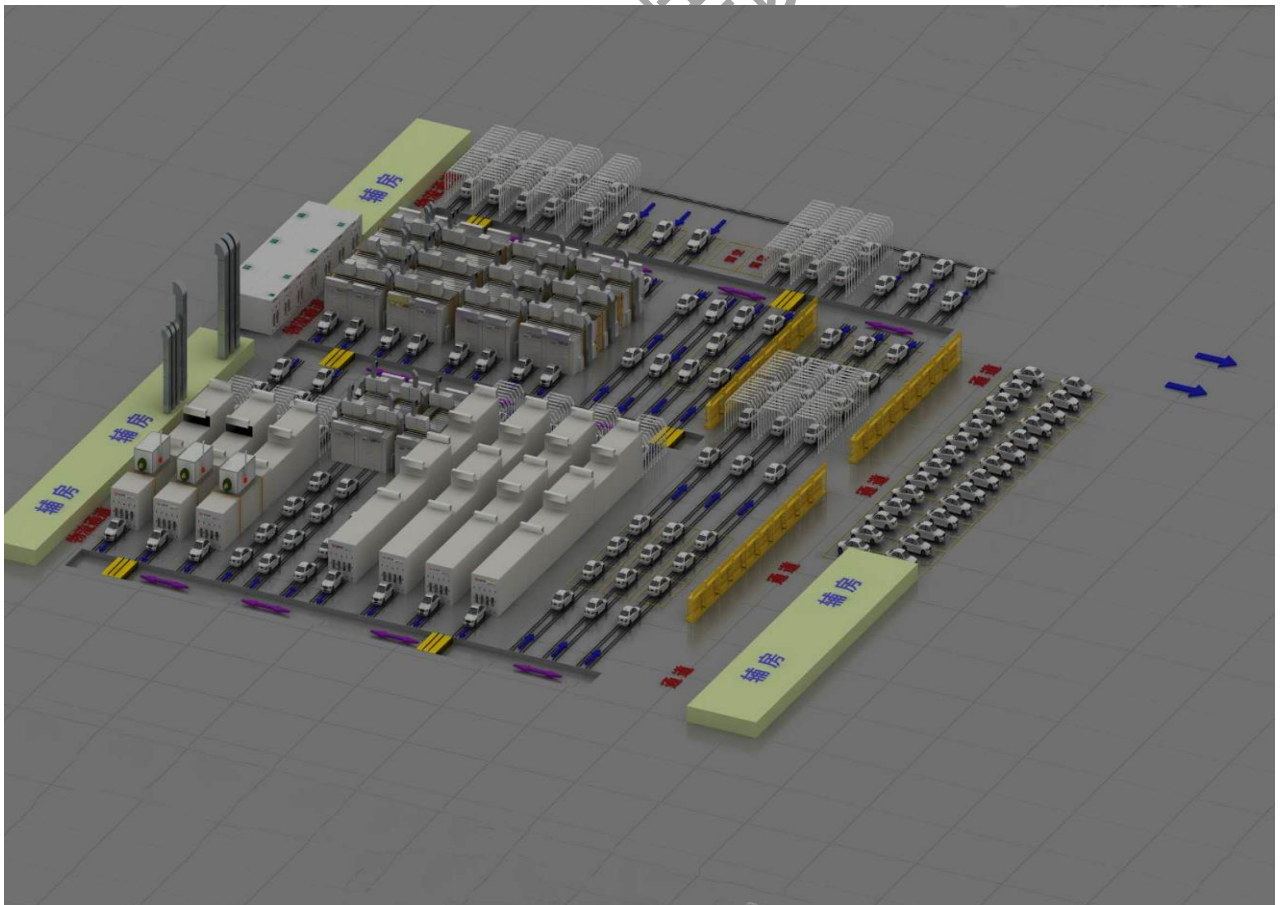


Guangdong Jingzhongjing Industrial Painting Equipment Co., Ltd
China ·Jiangsu Production Base

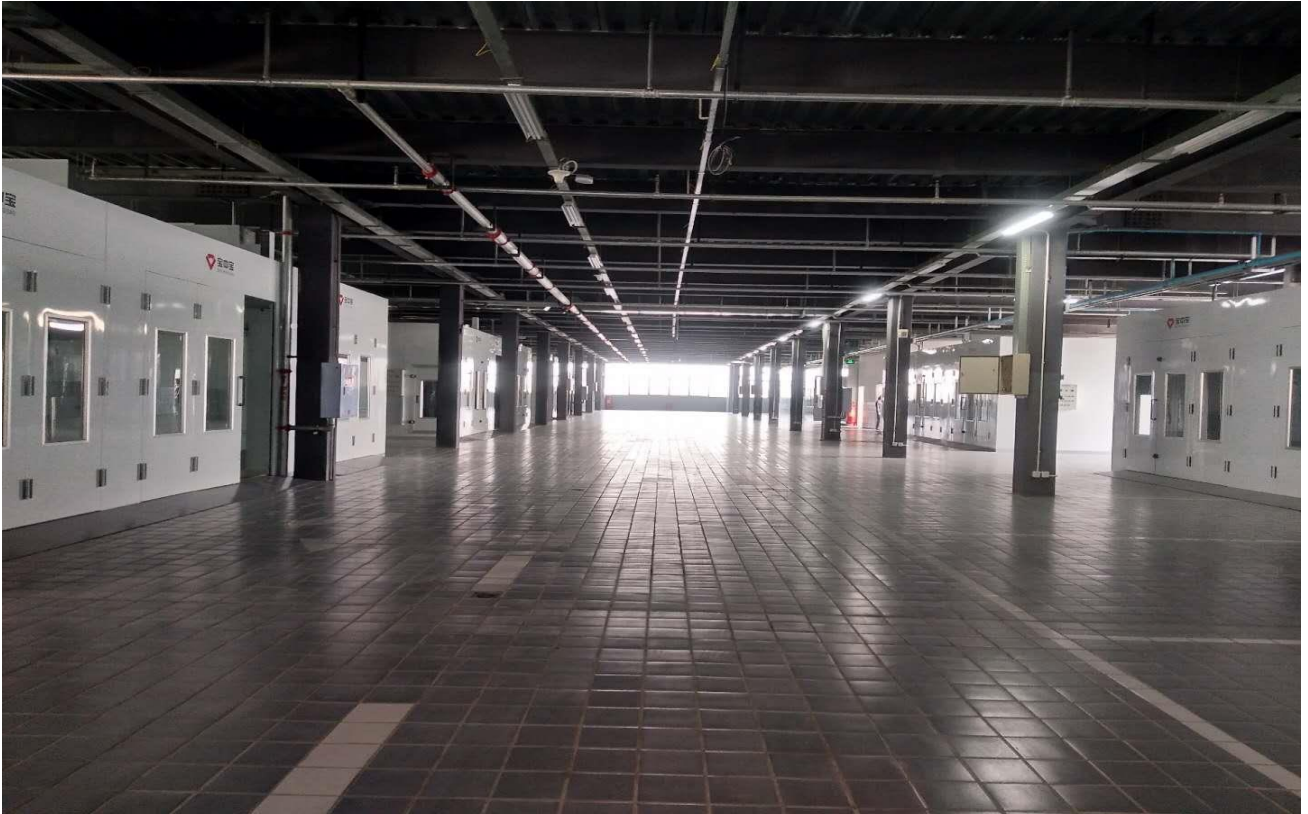
I Project Cases

1. Xinyang Yixin Auto Sheet Metal Line (Open on January 5, 2020):

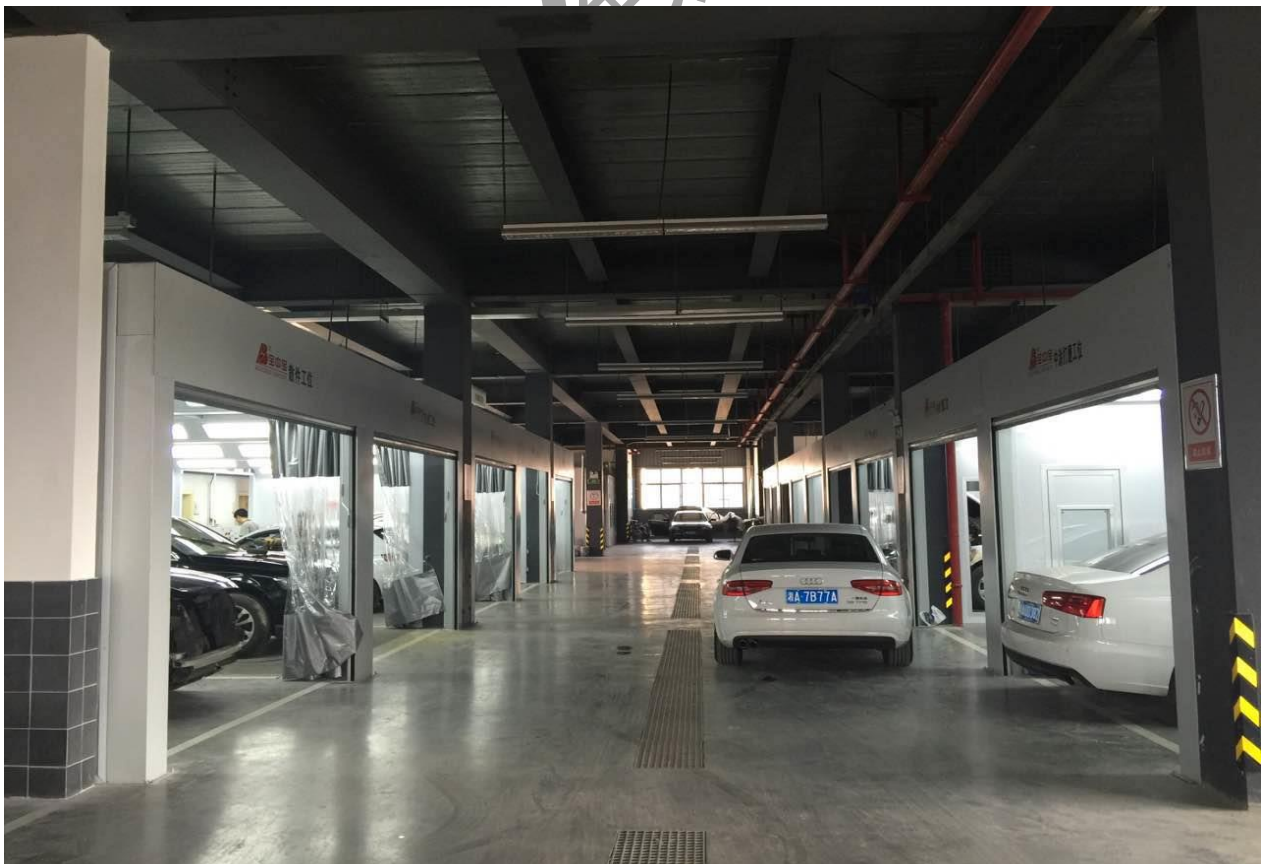




2. Chengdu Jianguo Group 10 Auto Sheet Metal lines



3. Changsha Huayuntong Audi Store Project



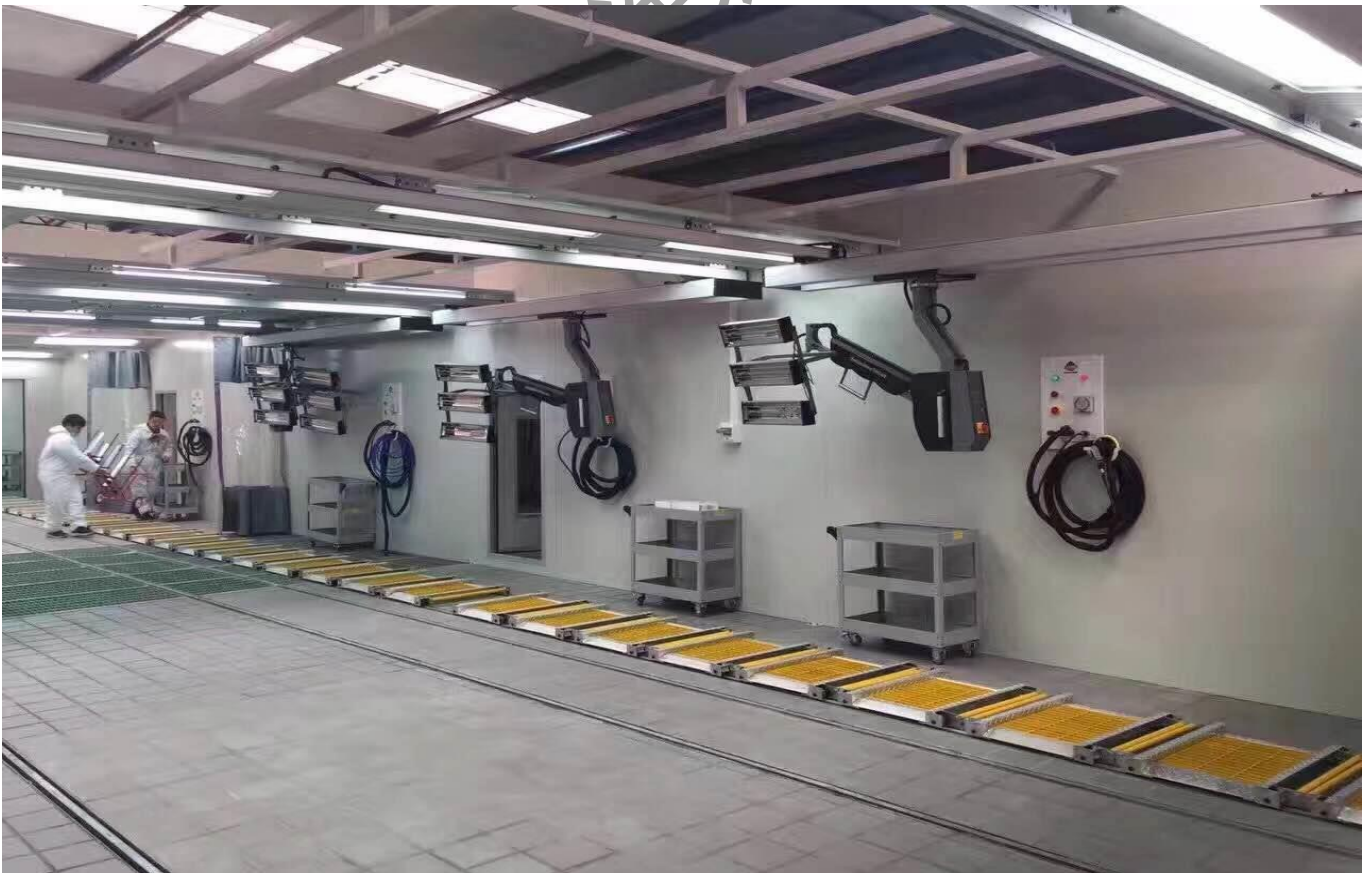
4. Chengdu Zhan Electric Auto Sheet Metal Line



5. Dazhou Tianma Group Auto Sheet Metal Line



6. Central Dust Collection Dry Grinding System



II Auto Sheet Metal Line Specification

1. Prep Station Specification (1 station)

Inner size	7000×4000×3100mm (L×W×H)
Outer size	7000×4000×3100mm (L×W×H)
Rail / Trolley	Each station is equipped with 4 transport trolleys and 6 sliding tracks (of which two return rails are used to transport trolleys). The sliding track is made of 8 # channel steel and 30 * 40 thickened square tube welded. The structure is strong, and the surface is galvanized to prevent rust . The mobile trolley is made of 5.0 thick anti-skid pattern plate, ground grille (the ground grille is welded by 30 × 4 flat iron and 8mm diameter twisted steel planer groove), wheels, shafts and bearing devices. The surface of the moving trolley is galvanized to prevent rust .
Remarks	This station is only equipped with rails and rail transport trolleys.

2. Putty /Sanding/ Middle coat sanding/Cover Station Specification (A total of 5 stations, the following is for single station)

Inner size	6900×3900×2650mm (L×W×H)
Outer size	7000×4000×3100mm (L×W×H)
Service door	5 working stations are equipped with 3 sets of working doors, single set of working doors Parameters: 800 × 2000mm (W × H), supporting aluminum alloy cladding tempered glass observation window with pressure lock and professional mold opening, tempered glass size: 400 × 1000 × 5mm (W × H × T).
Room system	<p>1. The front and left and right sides are made of powder-coated 1.2 galvanized sheet to make top hanging beam and anti-static manual PVC soft curtain. Magnet with iron block at the bottom; soft curtain sliding adopts customized aluminum alloy track, equipped with wear-resistant metal pulley and hook (the middle shared soft curtain is divided into two pieces, which is convenient for front and back operation); The right side of the sheltering station and the left side of the painting station share a set of electric rolling gates.</p> <p>2. Rock wool wall panels on the top and back sides: 50mm thick, δ = 0.426mm color steel plate inside and outside, socket type, width 1150mm, inner filling: rock wool. Color: optional.</p> <p>3. There is an electrical cabinet on the rear side: the electrical cabinet has three layers, one of which is the electrical control layer and the other two are the tool</p>

	cabinet layer. Control panel with 2 explosion-proof 380V 16A power supply (European standard), 2 ×220V explosion-proof power supply (national standard), 2 ×220V explosion-proof power supply (European standard), 2 pcs compressed air ports (first-level filter) with pressure regulating valve, air pressure Adjustable; easy to use electricity and gas;		
Lighting system	LED lighting is arranged on both sides of the top (LED tube energy saving, long service life and high illuminance), the light box frame is made by bending 0.8mm thick powder-sprayed galvanized sheet , and the lampshade is sealed with 2.0mm black sponge around the lampshade The tube is isolated from the indoor gas. Quantity: 8 groups × 4pcs = 32pcs 18W (LED) lighting tubes, lighting glass (size: 1255×294×4).		
Rail/Trolley	Each station is equipped with 4 transport trolleys and 6 sliding rails (of which two return rails are used to transport trolleys). The sliding track is made of 8 # channel steel and 30 * 40 thickened square tube welded. The structure is strong, and the surface is galvanized to prevent rust . The mobile trolley is made of 5.0-thick anti-skid pattern plate, ground grille (the ground grille is welded by 30 ×4 flat iron and twisted steel planer with a diameter of 8mm), wheels, shafts and bearing devices. The surface of the moving trolley is galvanized to prevent rust .		
Voltage	380V, 3P, 50HZ	Total power	1KW

3. Middle Coat Primer Station Specification (1set)

Inner size	6900×4000×2650mm (L×W×H)
Outer size	8250×4100×3400mm (L×W×H)
Basement system	300mm high, adopts an integrated anti-rust exhaust platform. It consists of a high-strength three-row pattern plate and two rows of ground grids. The track support is made of 80 * 40 steel. The overall structure is light, novel and beautiful in shape; good strength, rigidity, stability and impact resistance. The surface of the grille and checkerboard are all sprayed.
Room system	1. The front and left and right sides are made of powder sprayed 1.2 galvanized sheets to make top hanging beams and anti-static manual PVC soft curtains. Soft curtain color: up and down optional, transparent in the middle, soft curtain thickness: 0.5mm; built-in magnets on both sides of the soft curtain, bottom With iron block vertical weight; soft curtain sliding adopts customized aluminum alloy

	<p>track, with wear-resistant metal pulley and hook (the middle shared soft curtain is divided into two pieces to make it convenient for front and back operation);</p> <p>2. Rock wool wallboard with rear side: thickness 50mm, inside and outside $\delta = 0.426\text{mm}$ color steel plate, socket type, width 1150mm, inner filling: rock wool.</p> <p>Color: optional.</p>
Lighting system	<p>LED lighting is arranged on both sides of the top (LED tube energy saving, long service life and high illuminance), the light box frame is made by bending 0.8mm thick powder-sprayed galvanized sheet, and the lampshade is sealed with 2.0mm black sponge around the lampshade The tube is isolated from the indoor gas.</p> <p>Quantity: 8 groups \times 4pcs = 32pcs 18W (LED) lighting tubes, lighting special glass (glass size: 1255 length \times 294 width \times 4 thickness).</p>
Ventilation system	<p>1. Made of sprayed profiles and sprayed steel plates, galvanized steel plate masks, and rock wool thermal insulation materials in the middle.</p> <p>2. The air intake adopts 1 motor direct drive single inlet turbine fan. The model and technical parameters of a single fan are as follows, model: BZB-710, power: 5.5KW, flow: 15000m³ / h. The motor is a vertical motor</p> <p>3. The exhaust fan adopts 1 motor direct drive single inlet turbine fan. The model and technical parameters of a single fan are as follows, model: BZB-710, power: 5.5KW, flow: 15000m³ / h. The motor is a vertical motor.</p>
Filtration system	<p>Primary filter, ceiling filter, fiberglass filter, activated carbon filter.</p>
Ceiling panel	<p>0.8mm thick galvanized sheet</p>
Air exhaust duct	<p>0.8mm thick high-quality galvanized steel plate and a mold flange made of professional equipment. The air duct comes standard with 4 straight pipe and 1 elbow.</p>
Control system	<p>Adopt knob control, the main components are high-quality brand products, and the main circuit is provided with multiple protections. Equipped with lighting switch, fan switch, emergency stop switch, fault alarm, etc.</p>
Rail / Trolley	<p>Each station is equipped with 4 transport trolleys and 6 sliding tracks (of which two return rails are used to transport trolleys). The sliding track is made of 8 # channel steel and 30 * 40 thickened square tube welded. The structure is strong, and the surface is galvanized to prevent rust. The mobile trolley is made of 5.0 thick anti-skid pattern plate, ground grille (the ground grille is welded by 30 \times 4 flat iron and 8mm diameter twisted steel planer groove), wheels, shafts and bearing devices.</p>

	The surface of the moving trolley is galvanized to prevent rust.		
Voltage	380V, 3P, 50HZ	Total power	12KW

4. Primer Baking Station Specification (1 station)

Inner size	6900×3900×2650mm (L×W×H)
Outer size	7000×4000×3100mm (L×W×H)
Service door	1 set of working doors, single set of working doors Technical parameters: 800 × 2000mm (W × H), aluminum alloy cladding tempered glass observation window with pressure lock and professional mold opening, tempered glass size: 400 × 1000 × 5mm (W × H × T).
Room system	<p>1. The front and left and right sides are made of powder sprayed 1.2 galvanized sheets to make top hanging beams and anti-static manual PVC soft curtains. Soft curtain color: up and down optional, transparent in the middle, soft curtain thickness: 0.5mm; built-in magnets on both sides of the soft curtain, bottom With iron block vertical weight; soft curtain sliding adopts customized aluminum alloy track, with wear-resistant metal pulley and hook (the middle shared soft curtain is divided into two pieces to make it convenient for front and back operation);</p> <p>2. Rock wool wall panels on the top and back sides: 50mm thick, $\delta = 0.426\text{mm}$ color steel plate inside and outside, socket type, width 1150mm, inner filling: rock wool. Color: optional.</p>
Lighting system	LED lighting is arranged on both sides of the top (LED tube energy saving, long service life and high illuminance), the light box frame is made by bending 0.8mm thick powder-sprayed galvanized sheet , and the lampshade is sealed with 2.0mm black sponge around the lampshade The tube is isolated from the indoor gas. Quantity: 8 groups × 4pcs = 32pcs 18W (LED) lighting tubes, lighting special glass (glass size: 1255 length × 294 width × 4 thickness).
Filtration system	Two natural air inlets with filtering are opened at the top.
Heating system	Specification of infrared lamp: the lampshade is made of aluminum alloy, and the mirror surface is made of stainless steel. SIND21 inch short-wave infrared lamp. Using microcomputer multi-program control system, digital display, high-end, generous and stable. Possess time (0-30 minutes adjustable), power (30-100% adjustable), independent control. Work long. Pulse work. Pulse (preheat)

	automatically turns to long light. Work completion alarm prompt tone. The lampshade lifting is controlled by angler to be light and stable. Can be rotated at any angle to the position to be baked. Equipped with 6 lamps (one for two), each lamp 1KW, a total of 6KW, single head baking area: 1200 × 1000mm, baking distance: 400-600mm; top slide rail baking lamp price is not included		
Control system	Adopt knob control, the main components are high-quality brand products, and the main circuit is provided with multiple protections. Equipped with lighting switch, fan switch, emergency stop switch, fault alarm, etc.		
Rail / Trolley	Each station is equipped with 4 transport trolleys and 6 sliding tracks (of which two return rails are used to transport trolleys). The sliding track is made of 8 # channel steel and 30 * 40 thickened square tube welded. The structure is strong, and the surface is galvanized to prevent rust . The mobile trolley is made of 5.0 thick anti-skid pattern plate, ground grille (the ground grille is welded by 30 × 4 flat iron and 8mm diameter twisted steel planer groove), wheels, shafts and bearing devices. The surface of the moving trolley is galvanized to prevent rust .		
Voltage	380V, 3P, 50HZ	Total power	7KW

5. Painting Booth Specification (1set)

Inner size	6900×4000×2650mm (L×W×H)
Outer size	8250×4100×3400mm (L×W×H)
Basement system	300mm high, adopts an integral anti-rust exhaust platform, a walking platform composed of a high-strength all-terrain grille, and a track bracket made of 80 * 40 steel. The overall structure is light, novel and beautiful in shape; good strength, rigidity, stability and impact resistance. The surface of the grille and checkerboard are all sprayed.
Main door	1 set, folding door, four door leafs, sheet metal gate, 50mm thick, 0.8mm thick powder-coated galvanized sheet inside and outside, color: optional, filled with EPS in the plate, with aluminum alloy cladding tempered glass made by professional mold opening Observation window, tempered glass size: 550 × 1150 × 5mm (W × H × T), a pressure lock is provided on the door to facilitate personnel to enter and exit directly.

Room system	<p>1. Rock wool wallboard with rear side: thickness 50mm, inside and outside $\delta = 0.426\text{mm}$ color steel plate, socket type, width 1150mm, inner filling: rock wool. Density: 80KW / M³ color: optional.</p> <p>2. A set of electric rolling gates are provided on both sides of the painting station. Size is 6000 × 2250mm; both sides are welded with 150 × 150 × 3.75 thickened square tube columns and 1.2 thick galvanized plates, and the surface is powder-sprayed. The door brakes are made of color steel sandwich material, filled with insulation material polyurethane (PU), copper core motor: model: 1P-1000KG, power: 550W, voltage: 380V. 2 sets of control switches. In case of obstruction + alarm: 1 set. Remote control: 1 set. Roll gate brand: Baozhongbao.</p>
Lighting system	<p>LED lighting is arranged on both sides of the top (LED tube energy saving, long service life and high illuminance), the light box frame is made by bending 0.8mm thick powder-sprayed galvanized sheet, and the lampshade is sealed with 2.0mm black sponge around the lampshade The tube is isolated from the indoor gas. Quantity: 8 groups × 4pcs = 32pcs 18W (LED) lighting tubes, lighting special glass (glass size: 1255 length × 294 width × 4 thickness).</p>
Ventilation system	<ol style="list-style-type: none"> Made of sprayed profiles and sprayed steel plates, galvanized steel sheet masks, and rock wool thermal insulation material in the middle. The air intake adopts 1 motor direct drive single inlet turbine fan. The model and technical parameters of a single fan are as follows, model: BZB-710, power: 7.5KW, flow: 25000m³ / h. The motor is a vertical motor. The exhaust fan adopts 1 motor direct drive single inlet turbine fan. The model and technical parameters of a single fan are as follows, model: BZB-710, power: 7.5KW, flow: 25000m³ / h. The motor is a vertical motor.
Filtration system	<p>Primary filter, ceiling filter, fiberglass filter, activated carbon filter.</p>
Ceiling panel	<p>0.8mm thick galvanized sheet.</p>
Air exhaust duct	<p>0.8mm thick high-quality galvanized steel plate and a mold flange made of professional equipment. Air duct standard (4 straight pipe, 1 elbow).</p>
Control system	<p>Adopt knob control, the main components are high-quality mainstream brand products, and the main circuit is provided with multiple protections. Equipped with lighting switch, paint spray switch, emergency stop switch, fault alarm, etc.</p>
Rail / Trolley	<p>Each station is equipped with 4 transport trolleys and 6 sliding tracks (of which two return rails are used to transport trolleys). The sliding track is made of 8 # channel</p>

	steel and 30 * 40 thickened square tube welded. The structure is strong, and the surface is galvanized to prevent rust . The mobile trolley is made of 5.0 thick anti-skid pattern plate, ground grille (the ground grille is welded by 30 × 4 flat iron and 8mm diameter twisted steel planer groove), wheels, shafts and bearing devices. The surface of the moving trolley is galvanized to prevent rust .		
Voltage	380V, 3P, 50HZ	Total power	16KW

6. Baking Booth Specification (1set)

Inner size	6900×4000×2650mm (L×W×H)
Outer size	8250×4100×3400mm (L×W×H)
Basement system	300mm high and adopts an integral anti-rust exhaust platform. It consists of a high-strength two-row ground grid and three rows of checkered plates. The track support is made of 80 * 40 steel. The overall structure is light, novel and beautiful in shape; good strength, rigidity, stability and impact resistance.
Main door	1 set, folding door, 4 door leafs, sheet metal gate, 50mm thick, 0.8mm thick powder-coated galvanized sheet inside and outside, color: optional, filled with EPS in the plate, with aluminum alloy cladding tempered glass made by professional mold opening Observation window, tempered glass size: 550 × 1150 × 5mm (W × H × T), a pressure lock is provided on the door to facilitate personnel to enter and exit directly.
Service door	1 set, size: 800 × 2000mm (W × H), supporting aluminum alloy cladding tempered glass observation window made by pressure lock and professional mold opening, tempered glass size: 400 × 1000 × 5mm (W × H × T).
Room system	<ol style="list-style-type: none"> 1. Rock wool wall panels with one side and rear side: 50mm thick, δ = 0.426mm color steel plate inside and outside, socket type, width 1150mm, inner filling: rock wool. Color: optional. 2. One side of the paint station and one side of the paint station share a set of electric rolling gates. The size of the single set of rolling gate openings is 6000 × 2250mm; both sides are welded with 150 × 150 × 3.75 thickened square tube columns and 1.2 thick galvanized sheets, Surface dusting treatment. The door brakes are made of color steel sandwich material, filled with insulation material polyurethane (PU), copper core motor: model: 1P-1000KG, power: 550W, voltage: 380V. 2 sets of control switches. In case of obstruction + alarm: 1 set. Remote control: 1 set. Roll gate brand: Baozhongbao. The price of the electric rolling gate is not included.

Lighting system	LED lighting is arranged on both sides of the top (LED tube energy saving, long service life and high illuminance), the light box frame is made by bending 0.8mm thick powder-sprayed galvanized sheet , and the lampshade is sealed with 2.0mm black sponge around the lampshade The tube is isolated from the indoor gas. Quantity: 8 groups × 4pcs = 32pcs 18W (LED) lighting tubes, lighting special glass (glass size: 1255 length × 294 width × 4 thickness).
Cabinet	The cabinet is placed at the rear, basement exhaust, square pipe frame. The air supply and exhaust cabinet mask adopts double-layer spray mask, filled with 20mm thick rock wool sound insulation material. The middle is filled with rock wool sound insulation and heat insulation materials, and the bottom of the fan is padded with rubber skin to offset the noise generated by some vibrations.
Ventilation system	Circulation fan adopts 1 motor direct drive single inlet turbine fan. The model and technical parameters of a single fan are as follows, model: BZB-710, power: 5.5KW, flow: 15000m ³ / h. The motor is a vertical motor.
Heating system	<p>1. Specification of infrared lamp: the lampshade is made of aluminum alloy, and the mirror surface is made of stainless steel. SIND21 inch short-wave infrared lamp. Using microcomputer multi-program control system, digital display, high-end, generous and stable. Possess time (0-30 minutes adjustable), power (30-100% adjustable), independent control. Work long. Pulse work. Pulse (preheat) automatically turns to long light. Work completion alarm prompt tone. The lampshade lifting is controlled by angler to be light and stable. Can be rotated at any angle to the position to be baked. Equipped with 6 lamps (one for two), each lamp 1KW, a total of 6KW, a single head paint area: 1200 × 1000mm, paint distance: 400-600mm. The price of the top rail baking lamp is not included.</p> <p>2. Infrared heating of the waist: 4 groups on one side, 2 groups on the back, 3KW / group, a total of 18KW.</p>
Filtration system	Primary filter, ceiling filter, fiberglass filter, active carbon filter.
Ceiling panel	0.8mm thick galvanized sheet
Control system	Adopt knob control, the main components are high-quality brand products, and the main circuit is provided with multiple protections. Equipped with lighting switch, temperature time setting, paint switch, emergency stop switch, fault alarm, accumulated time, etc.

Rail / Trolley	Each station is equipped with 4 transport trolleys and 6 sliding tracks (of which two return rails are used to transport trolleys). The sliding track is made of 8 # channel steel and 30 * 40 thickened square tube welded. The structure is strong, and the surface is galvanized to prevent rust . The mobile trolley is made of 5.0-thick anti-skid pattern plate, ground grille (the ground grille is welded by 30 × 4 flat iron and twisted steel planer with a diameter of 8mm), wheels, shafts and bearing devices. The surface of the moving trolley is galvanized to prevent rust .		
Voltage	380V, 3P, 50HZ	Total power	31KW

Double Preparation Bays (major repair sanding room)		No.: PG-2020030037
Dimension	Inner size	6400 × (4000+4000) × 2800(L×W×H)
	Outer size	7853 × (4100+4100) × 3550 (L×W×H)
Room	Structure	Electric soft curtains are used on the front and left and right sides, manual PVC soft curtains are shared in the middle, and EPS wall panels on the rear wall are installed; the wall panels are installed vertically. , Deflector and high-quality filter cotton. The two rooms share a set of fan exhaust.
	Wall panel	50mm thick double-sided $\delta = 0.426\text{mm}$ color steel plate, inner filling material: PU;
	Ceiling panel	Basement exhaust
	Ventilation type	Made of δ -1.2mm galvanized steel plate, powder sprayed;
Basement	Structure	Made of $\delta = 1.2\text{mm}$ galvanized steel plate, 300mm high, assembled by a corrosion-resistant square steel frame, and is covered with a full grille, made of 30 × 5 flat iron, bearing 800kg, and the platform sinks. Each room is equipped with a load-bearing 3.5T lift.
Air intake system Air intake system	Cabinet	Made of profile and steel plate, galvanized steel plate mask, rock wool thermal insulation material in the middle, sprayed on the surface. Note: two rooms have one air supply cabinet, equipped with electric air door to control the air intake of the room.
	Fan parameter	DDF series turbofan, model: DDF-800, air volume: 34000m ³ /h, full pressure: 700Pa,
	Transfer type	Power: 11KW, Voltage: 400V / 50Hz / 3P,
	Quantity	Direct motor drive
	Noise	11KW, 1 set
	Cabinet	75-85db
Air exhaust system	Cabinet	Made of profile and steel plate, galvanized steel plate mask, rock wool thermal insulation material in the middle, sprayed on the surface,

		Note: two rooms have one exhaust cabinet.	
	Fan parameter	DDF series turbofan, model: DDF-800, air volume: 34000m ³ /h, full pressure: 700Pa,	
	Motor parameter	Power: 11KW, Voltage: 400V / 50Hz / 3P,	
	Transfer type	Direct motor drive	
	Quantity	11KW, 1 set	
	Noise	75-85db	
Lighting system	Ceiling light	6groups×4pcs=24 pcs×18 W, LED lamp;	
	Install type	Two side 45°	
	Glass	4.0mm tempered glass	
	Light box type	Standard	
	Parameter	≥600LUX; total power: 432W+432W	
Filtration system	Air intake filter	G3 primary filtering, filter out dust above 10μm	
	Ceiling filter	F5 filter cotton B TO B-560G, filter out dust above 5μm	
	Air return filter	Glass fiber filter cotton, exhaust filter cotton	
Air duct	Material	Made of δ = 0.8 galvanized sheet, and the two ends are equipped with mold flange connections	
	Quantity	Straight pipe: 4 sections, elbow: 1pc, with supply duct	
Control system	Material	Knob control, the main components use Schneider brand;	
	Control system	Exhaust air adopts standard Y / △ step-down start control system	
	Function	Power indication, fan switch, fault alarm, emergency stop switch, motor overload and overcurrent protection, etc.	
	Special instruction	Electric damper to control the air intake.	
Voltage	400V, 50HZ, 3P	Max. temperature	Door temperature
Air speed	0.18m/s	Total power	13KW
Color	Optional: white, blue		

Working bay (major repair prep station)		No.: PG-2020030037
Dimension	Inner size	7000×4000×2800(L×W×H) dimension for one room
	Outer size	7100×25250×2800(L×W×H)
Room	Structure	Electric soft curtains are used on the front and back, manual PVC soft curtains are shared in the middle, and EPS wall panels on both sides; the wall panels are vertically embedded, without air plenum, without floor, without fan
	Wall panel	50mm thick double-sided δ = 0.426mm color steel plate, inner filling material: PU;
	Ventilation type	Back wall exhaust

	Edging material	Made of δ -1.2mm galvanized steel plate, powder sprayed;	
	Instruction	Equipped with electric soft curtain remote control	
Lighting system	Lighting is installed on the suspended ceiling, 6groups \times 4pcs=24 pcs \times 18 W, LED lamp;		
Voltage	400V, 50HZ, 3P	Max. temperature	Door temperature
Air speed		Total power	1KW
Color	Optional: white, blue		

Painting and Baking Booth		No.: PG-2020030037
Dimension	Inner size	6900 \times 4000 \times 2800(L \times W \times H)
	Outer size	7006 \times 5356 \times 3550(L \times W \times H)
Room	Structure	Wall panel vertically installed, air plenum with the top net, deflector and high-quality filter cotton are laid. Height of air plenum: 450mm;
	Wall panel	50mm thick double-sided $\delta = 0.426$ mm color steel plate, inner filling material: PU;
	Ceiling panel	Single layer δ -0.8mm high-quality galvanized steel plate is made by bending;
	Ventilation system	Basement exhaust, full down draft
	Edging material	Made of δ -1.2mm galvanized steel plate, powder sprayed;
Main door	Structure	Manually folded sheet metal gate without edging, 3 door leaves, made of galvanized $\delta = 0.8$ mm inside and outside, thickness 50mm, infill: PU, equipped with standard door tempered glass observation window, size: 550 \times 1150mm (W \times H);
	Type	One way
	Quantity	Door size: 3000 \times 2700mm(W \times H), 1 set;
Service door	Structure	Adopt aluminum alloy frame structure, equipped with tempered glass observation window and escape lock to ensure the pressure relief when the indoor positive pressure is too large, the size of the observation window glass: 1000 \times 400 \times 5mm;
	Quantity	Door leaf size: 800 \times 2000mm(W \times H), quantity: 1set;
Basement	Structure	$\delta = 1.2$ mm galvanized steel plate, 300mm high, assembled by a corrosion-resistant square steel frame, and is covered with a whole grid. The grid is made of 30 \times 5 flat iron with a load of 800kg and the platform sinks, Equipped with a load-bearing 3.5T under body lift.
Air intake system	Cabinet	It is made of profile and steel plate, galvanized steel sheet mask, rock wool thermal insulation material in the middle, sprayed on the surface,
	Fan parameter	BZB series centrifugal fan, model: BZB-710, air volume: 25000m ³ /h, full pressure: 600Pa,

	Motor parameter	Power: 7.5KW, voltage: 400V / 50Hz / 3P,
	Install type	Direct motor drive
	Quantity	7.5KW, 1 set group, air volume: 25000m ³ /h.
	Noise	75-85db
Air exhaust system	Cabinet	It is made of profile and steel plate, galvanized steel sheet mask, rock wool thermal insulation material in the middle, sprayed on the surface,
	Fan parameter	BZB series centrifugal fan, model: BZB-710, air volume: 25000m ³ /h, full pressure: 600Pa,
	Motor parameter	Power: 7.5KW, voltage: 400V/50Hz/3P,
	Install type	Direct motor drive
	Quantity	7.5KW, 1 set, air volume: 25000m ³ /h.
	Noise	75-85db
Lighting system	Ceiling light	8groups×4pcs=32pcs×18 W, LED lamp;
	Install type	Two side 45°
	Bottom light	8 groups×2 pcs =16 pcs×18 W, LED lamp;
	Install type	Left wall 4 groups, right wall 4 groups, vertical installation.
	Glass	4.0mm tempered glass
	Light box type	Standard
	Parameter	≥800LUX; total power: 864W
Filtration system	Air intake filter	G3 primary filtering, filter out dust above 10μm
	Ceiling filter	F5 filter cotton B TO B-560G, filter out dust above 5μm
	Air return filter	Fiberglass filter (floor filter)
	Waste gas treatment	Activated carbon filtration
Air duct	Material	Made of δ = 0.8 galvanized sheet, and the two ends are equipped with mold flange connections
	Quantity	Straight: 4sections, elbow: 1pcs, 1 pcs reducing diameter, 1 pcs manual damper.
Heating system	Heating type	Diesel burner + heat exchanger
	Heat Exchanger	Using 1Gr18Ni9Ti stainless steel (SUS304), δ = 1.2mm, equipped with standard double-layer furnace, made of double-layer heat exchange stainless steel tubes;
	Burner	Italy G20 Reillo diesel burner, heating capacity: 180,000 Kcal / h;
	Conversion damper	Pneumatic actuator performs internal and external circulation conversion,
	Quantity	1 set, heating capacity: 180,000 Kcal / h;
	Chimney duct	4 sections straight pipe, 2 pcs elbow, δ = 0.8mm galvanized sheet,
Control system	Material	Knob control, the main components use Schneider brand;
	Control system	Supply and exhaust air adopt standard direct start control system
	Function	Paint spraying, heating paint spraying, baking paint, lighting,

		emergency stop switch, fault alarm, cumulative time, paint delaying protection, motor overload and overcurrent protection, fan and heating system interlock, etc.	
Voltage	400V, 50HZ, 3P	Max. temperature	80°C
Air speed	≥0.25m/s	Total power	17KW
Color	Optional: white, blue		

Instruction Manual:

1. The foundation construction involved in this project, the opening of the plant wall (or roof), the opening after installation of the equipment, and rainproof are all completed by the buyer looking for a professional team;
2. Before the equipment enters the site, all water, electricity, and gas must be in place to facilitate the installation and commissioning of the equipment.
3. Power supply: The purchaser needs to prepare the total power supply required by the above equipment in advance, and lead the power supply connection port to the control box of the above equipment. (Suggestion: set up an independent main control cabinet for the above equipment, and then lead the main control cabinet to the electrical control box of each station equipment)

III Labor Protection and Safe Production

1. Site Hygiene

The safety standards comply with GB6514-2008 "Safety Regulations for Painting Operations", and the hygiene standards for painting operations comply with the relevant requirements in TJ36-79 "Design Sanitation Standards for Industrial Enterprises"

2. Noise Control

This design uses a series of noise reduction measures to ensure that the indoor noise meets the relevant provisions in GBJ87-85 "Code for Design of Noise Control of Industrial Enterprises".

IV Environmental Protection:

This device is based on the following standards:

- (1). GB6514-2008 "Safety Regulations for Painting Operations"
- (2). GBJ87-85 "Code for Design of Noise Control of Industrial Enterprises"
- (3). GB12348-90 "Standards for Noise at the Boundary of Industrial Enterprises"

V Provide File:

Provide operation manual and electrical schematic diagram when installation.

VI Quality Assurance:

Our company passed the ISO9001 quality certification in 2002. From the product design process, review requirements, as well as the supply of raw materials, manufacturing, and on-site installation, all are executed and inspected in accordance with the quality system procedures.

Guangdong Jingzhongjing Group

April 10, 2020